



VI-4686 Mechanical Switch

Mechanical Switch VI-4686

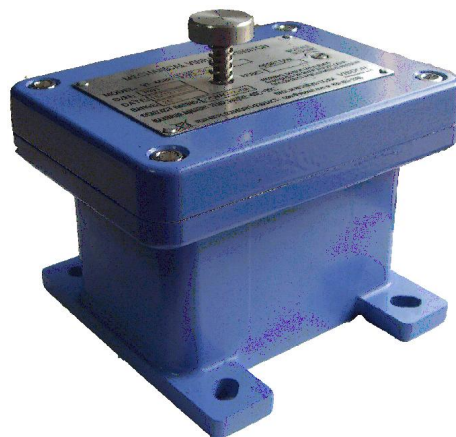
The Model VI-4686 vibration switch is designed for economical solution and maintenance free service in permanent installation to meet all requirements for mechanical switches. This unit provides maximum vibration protection for low to medium speed machinery such as motors, pumps, compressors. A special sensitive mechanism activates an snap action switch with SPDT output contacts if the vibration exceeds an adjustable setpoint. The model VI-4686 contacts can be used to active or initiate equipment shutdown. The enclosure is explosion proof with ATEX/CSA rating. SPDT output contacts to accommodate DPDT need (separate trip and trip light circuits) are available. This instrument may be wired to actuate cause a shutdown before costly damage occurs.

Application

- Heat Exchange Fans
- Cooling Tower Fans
- Recip Engines
- Reciprocating Compressor
- Pump
- Motors
- Industrial Fans
- Centrifuges

Feature

- Meets all requirements for mechanical switches in one package
- Explosion proof enclosure
- Local reset button and optional remote reset available
- SPDT or DPDT switch output contact
- Easy replacement of existing vibration switch



Specification

- Function: Armature mechanism trips on high vibration and operates snap action switch
- Vibrate Range: 1/4g to 10g
- Frequency Range: 0 to 3600 RPM
- Set point Adjust: 0 to 100% of range,
- Reset: Local reset, option remote reset with electrical
- Enclosure: Cast Aluminum
- Environment Rating: NEMA 4 & CE
- Weight: 3 lbs
- Temperature: -40° to 100°

VIBCON INSTRUMENTS INC RICHMOND TX 77407, USA

Sales & Service Tel: 1-832-863-2388, Fax: 1-832-886-1318, Email: sales@vibcon1.com

Order Information

Model: VI-4686-ABC-DE

A: Hazard Rating

0	= None
1	= CSA (Pending)
2	= ATEX (Pending)

B: Contacts

1	= SPDT
2	= DPDT

C: Full Scale Range

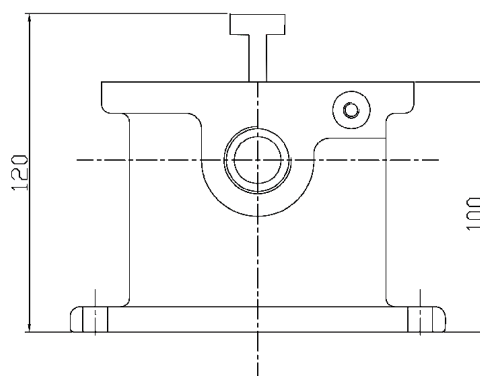
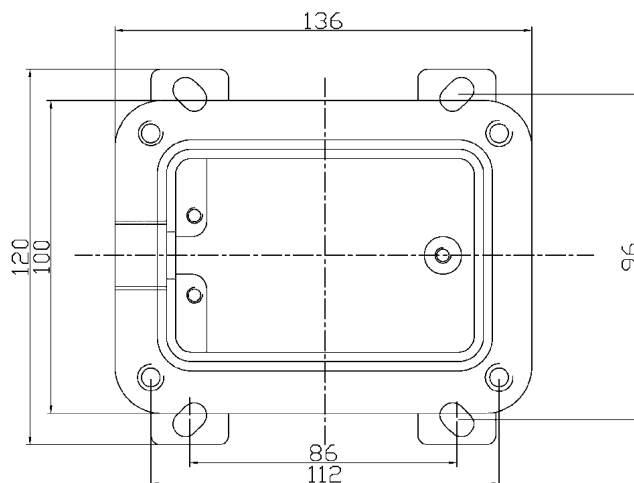
1	= 2 g
2	= 5 g
3	= 10 g

D: Electric Power

0	= None
1	= 115 Vac
2	= 240 Vac
3	= 24 Vdc

E: Wiring Entry

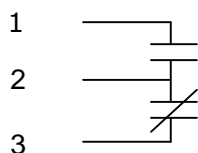
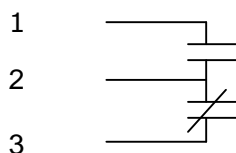
1	= M20
2	= 3/4 NPT



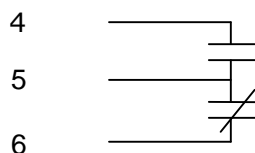
Unit:mm

User Wiring Diagrams

SPDT CONTACTS



DPDT CONTACTS



7 (+) reset Coil
8 (-) reset Coil